



NEWINGTON  
LONDON

2 Bedrooms

Apartment

Located in London

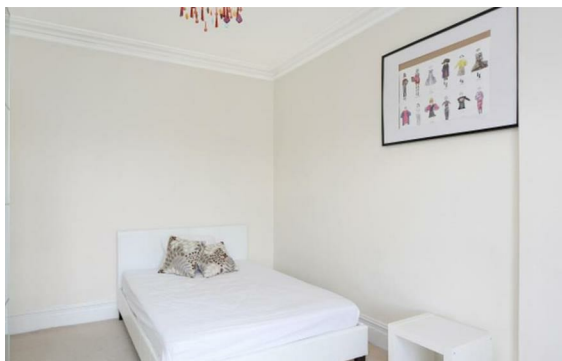
£900 Per Month



info@newingtonstates.com

<http://www.newingtonstates.com>

020 7724 2233



Set within lovely mansion block, this well-proportioned two-bedroom, two-bathroom apartment offers bright and elegant living on the second floor. The accommodation includes a spacious reception room, fully fitted kitchen, principal bedroom with en-suite, second double bedroom, and a modern family bathroom.

The building benefits from 24-hour portage and lift access, and is ideally located close to Marylebone's shops, cafés, restaurants, and excellent transport links. Regent's Park is also just a short walk away.

EPC Rating: C

### Energy Efficiency Rating: C

Agents Note: Whilst every care has been taken to prepare these particulars, they are for guidance purposes only. All measurements are approximate and are for general guidance purposes only and whilst every care has been taken to ensure their accuracy, they should not be relied upon and potential buyers/tenants are advised to recheck the measurements.

# NEWINGTON LONDON

60 Upper Montagu Street

London

W1H 1SN

020 7724 2233

[info@newingtonstates.com](mailto:info@newingtonstates.com)

<http://www.newingtonstates.com>